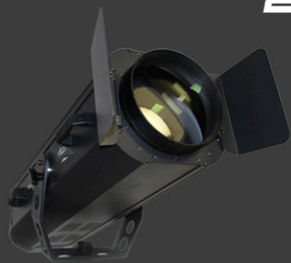


STARGATE LIGHTING

STARGATE LIGHTING

***106 CASTLE DRIVE
MADISON AL, 25758***

***WWW.STARGATELIGHTING.COM
SALES@STARGATELIGHTING.COM
256-858-1979***





FOLLOW SPOTS

1300W

700W



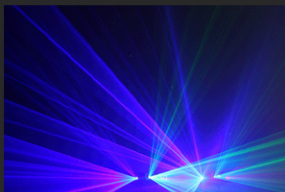
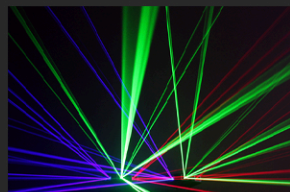
iP WASH LIGHTS

18x12 RGBAWUV



PRO WASH LIGHTS

18x6 RGBAWUV



DMX LASERS

RGB 3 BEAM

RGB RETRO 3 BEAM

FOLLOW SPOT

1300W LED





LIGHT UP THE STARS

*ILLUMINATE YOUR PERFORMERS
IN A STUNNING SPOT LIGHT
WITH OUR TOP OF THE LINE
1200W LED ENGINE FOLLOW
SPOT! THIS INCREDIBLY BRIGHT
FIXTURE CAN ILLUMINATE SUB-
JECTS AT OVER 600 FEET
AWAY!*



MODERN DESIGN
*LOOKING AT THE OLD
MODEL OF FOLLOW SPOTS,
WE'VE SIGNIFICANTLY RE-
DUCED THE OVERALL
WEIGHT TO ALLOW FOR
MUCH EASIER PLACEMENT
AND MOVEMENT OF THIS
FIXTURE. WITH THE MO-
TORIZED DIMMING AND IRIS,
YOU WON'T HAVE TO
BREAK A SWEAT!*

HIGHLIGHTS / MAIN FEATURES

- DURABLE DIE CAST ALUMINUM HOUSING
- 1200W WHITE LED ENGINE
- ADJUSTABLE COLOR TEMPERATURE
- PUSH-BUTTON COLOR SELECT
- WHITE, RED, GREEN, BLUE, YELLOW, PINK COLOR
- 3 PIN DMX IN/OUT
- DMX CONTROL OR MANUAL MODE
- MOTOR CONTROLLED ZOOM, IRIS, AND FOCUS
- 5 - 32 DEGREE ADJUSTABLE BEAM ANGLE
- 120V OPERATION

FIXTURE SPECS

type	Follow Spot
dmx type	3 pin IN/OUT
DMX modes	8 channel
Control Modes	DMX 512, Manual
Light Engine	1200W LED
Light Type	White, Red, Yellow, Blue, Green, Pink
Illuminance	35,000 lm
Pan/Tilt Angle	Manual
Beam Angle	5.7 - 32 deg, motor controlled
Power Type	120/240V AC
Power Consumption	13000W
Power Supply	PowerCon AC IN/OUT
Height	24.6"
Width	24.1"
Depth	43"
Weight	82 lbs, 95 with stand
IP rating	/
housing material	die-cast aluminum
housing color	black
operating temp	-4 - 104 F