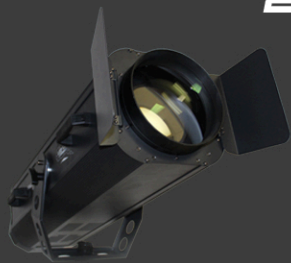


# STARGATE LIGHTING

***STARGATE LIGHTING***

***106 CASTLE DRIVE  
MADISON AL, 25758***

***WWW.STARGATELIGHTING.COM  
SALES@STARGATELIGHTING.COM  
256-858-1979***





## ***FOLLOW SPOTS***

***1300W***

***700W***



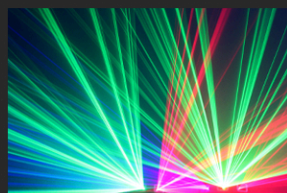
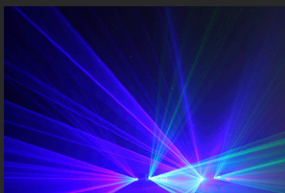
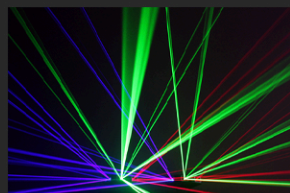
## ***iP WASH LIGHTS***

***18x12 RGBAWUV***



## ***PRO WASH LIGHTS***

***18x6 RGBAWUV***



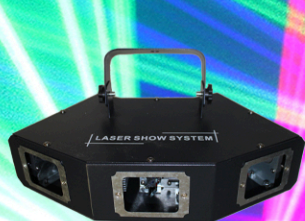
## ***DMX LASERS***

***RGB 3 BEAM***

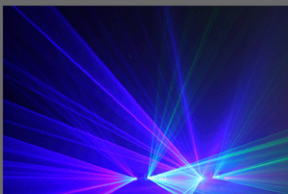
***RGB RETRO 3 BEAM***

# DMX LASER

*DUNE, 3 HEAD BEAM*







## ULTRA WIDE BEAM COVERAGE

*WITH THE CONVEX HOUSING, THIS LASER CAN ACHIEVE A WIDE 90 DEGREE COVERAGE AREA FOR AERIAL EFFECTS AND TERMINAL POINTS. THE ULTRA WIDE FAN OUT MAKES A STUNNING DISPLAY THAT EASILY IMPRESSES ANY CROWD.*



## PERFECT FROM ANY ANGLE

*WHETHER IT'S ON STAGE, CENTER OF THE ROOM, OR EVEN BACK OF HOUSE, A PAIR OF THESE WILL ADD SOME EXTRA FLAIR TO YOUR VENUE. PERFECT CENTERPIECE FIXTURE FOR A ROLLER SKATING RINK!*



# HIGHLIGHTS / MAIN FEATURES

- DURABLE DIE CAST ALUMINUM HOUSING
- 3 INDIVIDUAL BEAM SOURCES FOR AMAZING AERIAL EFFECTS
- VIVID RED, GREEN, AND BLUE COLOR
- 3 PIN DMX IN/OUT
- DMX, MASTER/SLAVE, AND SOUND ACTIVE CONTROL
- 10 CHANNEL PERSONALITY
- WIDE BEAM SPREAD FOR MASSIVE COVERAGE AREA
- 51 BUILT IN PATTERNS

## FIXTURE SPECS

type	DMX Laser
dmx type	3 pin IN/OUT
DMX modes	10 channel
Control Modes	DMX512, Auto, Sound, Master/Slave
Light Engine	Laser
Light Type	3 head, R G B
Illuminance	Red 100W, Green 50W, Blue 200W
Pan/Tilt Angle	/
Beam Angle	+ - 15, 90 collective
Power Type	120/240V AC
Power Consumption	< 200W
Power Supply	NEMA 5-15P IEC
Height	6"
Width	12"
Depth	4"
Weight	9.2lbs
IP rating	/
housing material	aluminum
housing color	black
operating temp	-4 - 104 F