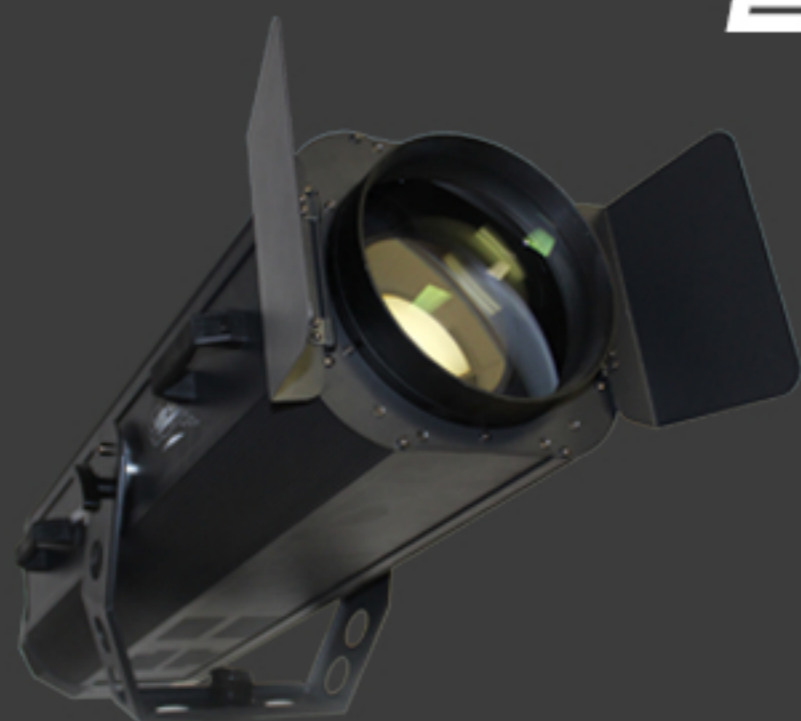


STARGATE LIGHTING

STARGATE LIGHTING

*106 CASTLE DRIVE
MADISON AL, 25758*

*WWW.STARGATELIGHTING.COM
SALES@STARGATELIGHTING.COM
256-858-1979*





FOLLOW SPOTS

1300W

700W



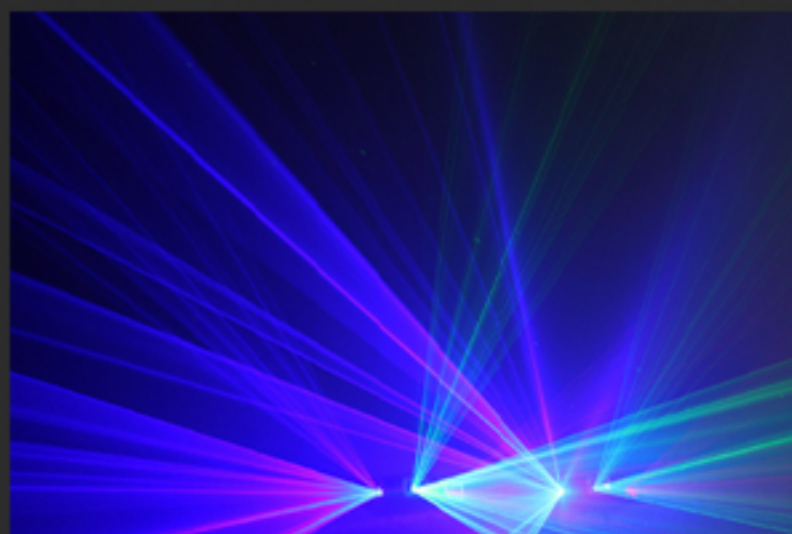
iP WASH LIGHTS

18x12 RGBAWUV



PRO WASH LIGHTS

18x6 RGBAWUV



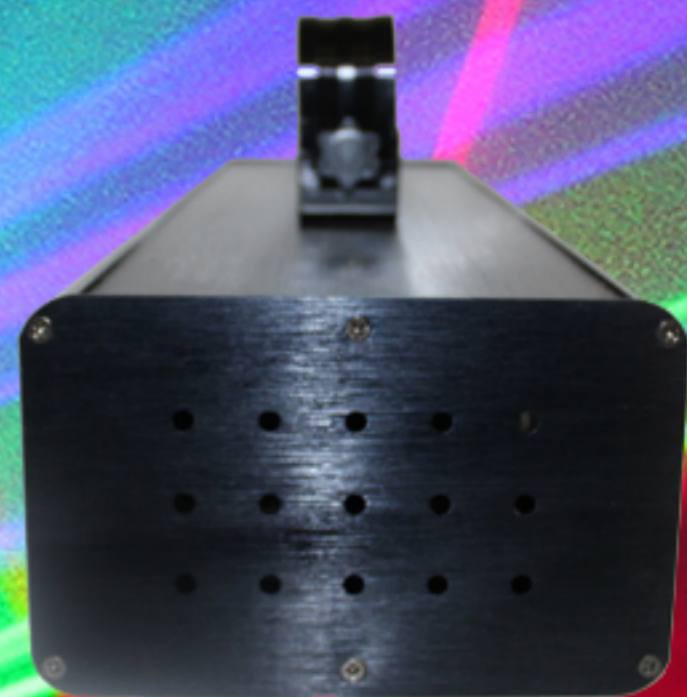
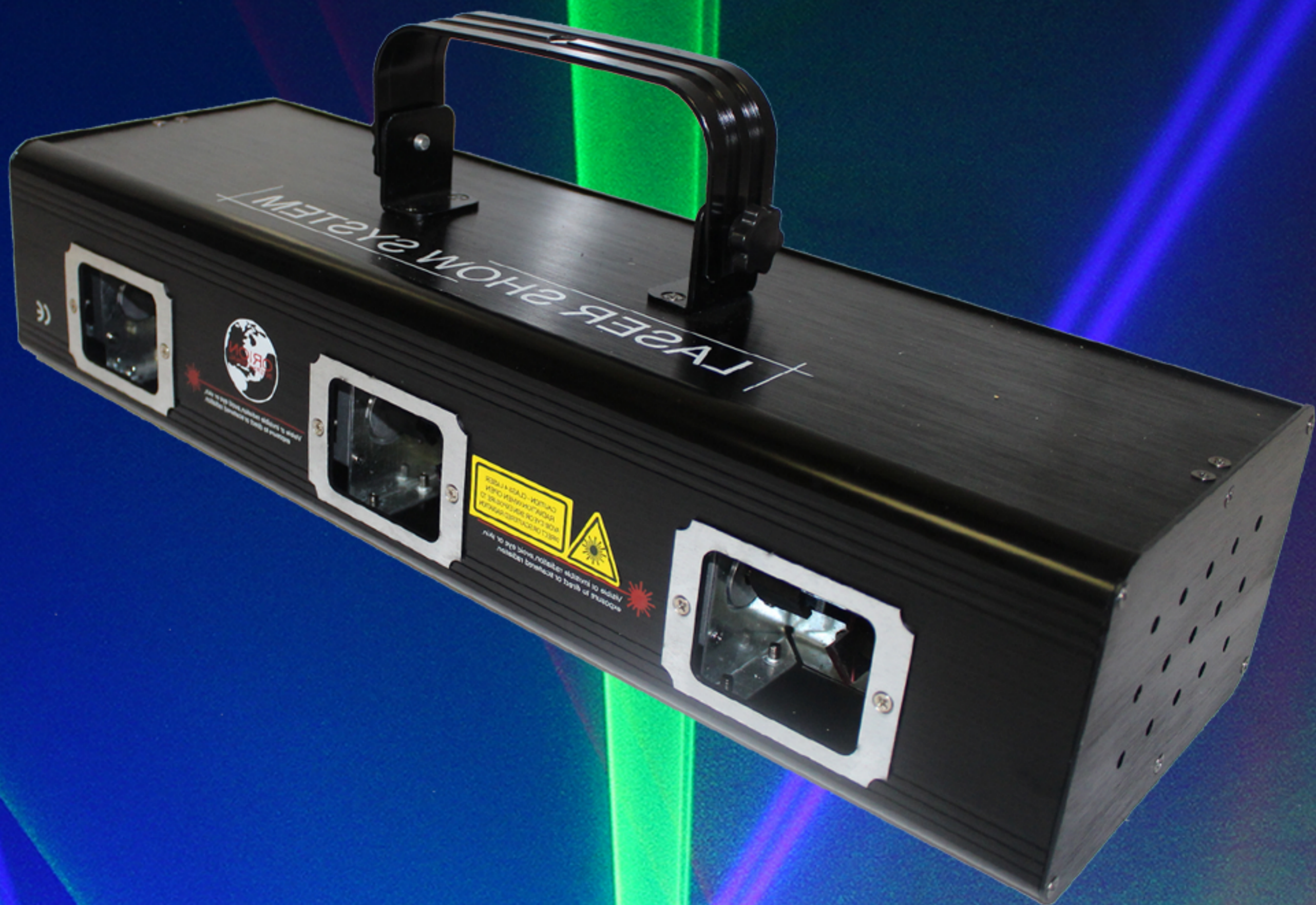
DMX LASERS

RGB 3 BEAM

RGB RETRO 3 BEAM

DMX LASER

"ZEN, RGB RETRO 3 BEAM"





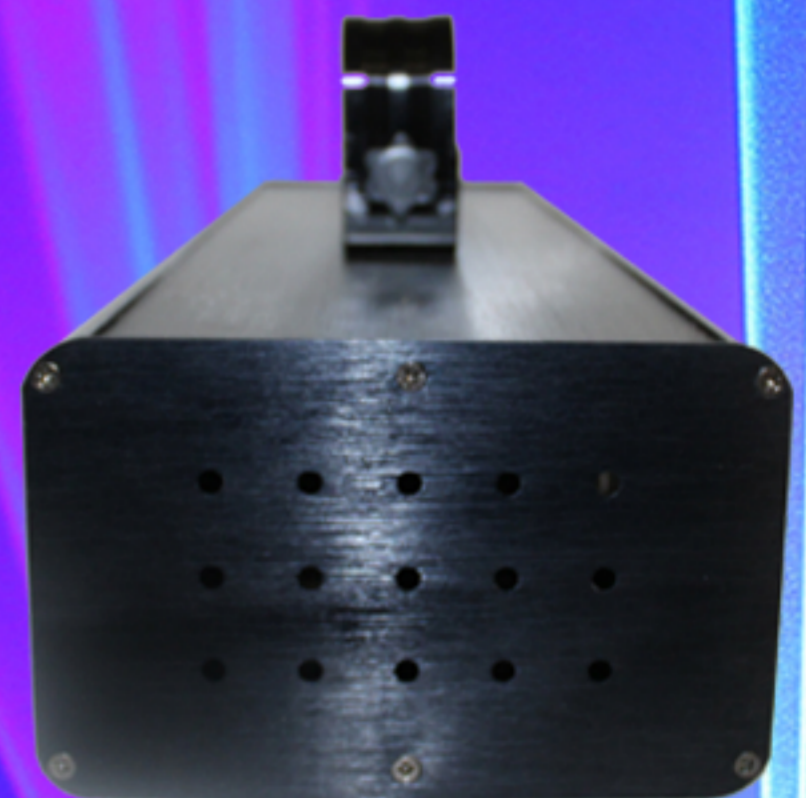
CLASSIC PROVEN DESIGN

**MODERN TECH UPGRADES
PACKED INTO THE BODY
STYLE OF A RETRO LASER
FIXTURE. BRINGING BACK A
STUNNING LASER LIGHT
WITH A POWERFUL STAGE
PRESENCE TO STEP UP
THE BAR FOR YOUR CLUB,
TRAVELING DJ, OR SMALL
TO MEDIUM VENUE.**



LIGHTWEIGHT DESIGN

**UNLIKE OLDER LASER
FIXTURES, THESE NEW
DESIGNS SAVE ON WEIGHT
AND COST. WITH
BRIGHTER AND BETTER
THAN EVER MARKET
TECHNOLOGY, LASER
FIXTURES ARE MAKING AN
EPIC COMEBACK FOR
LIGHTING DESIGNERS
ACROSS THE GLOBE.**



HIGHLIGHTS / MAIN FEATURES

- 3 HEAD / APERTURE LASER
- ULTRA BRIGHT OUTPUT
- BEST SUITED FOR SMALL TO MEDIUM SIZED VENUES
- RED, GREEN, AND BLUE COLOR
- 25 BUILT IN PATTERNS
- 3 PIN DMX IN/OUT
- 50 DEGREE SCANNING ANGLE [+ - 25]
- DMX, MASTER/SLAVE, AND SOUND ACTIVE CONTROL

FIXTURE SPECS

type	DMX Laser
dmx type	3 pin IN/OUT
DMX modes	9 channel
Control Modes	DMX512, Auto, Sound, Master/Slave
Light Engine	Laser
Light Type	3 head, R G B
Illuminance	/
Pan/Tilt Angle	/
Beam Angle	50 deg
Power Type	120/240V AC
Power Consumption	< 200W
Power Supply	NEMA 5-15P IEC
Height	4"
Width	16"
Depth	4"
Weight	12.5 lbs
IP rating	/
housing material	aluminum
housing color	black
operating temp	-4 - 104 F