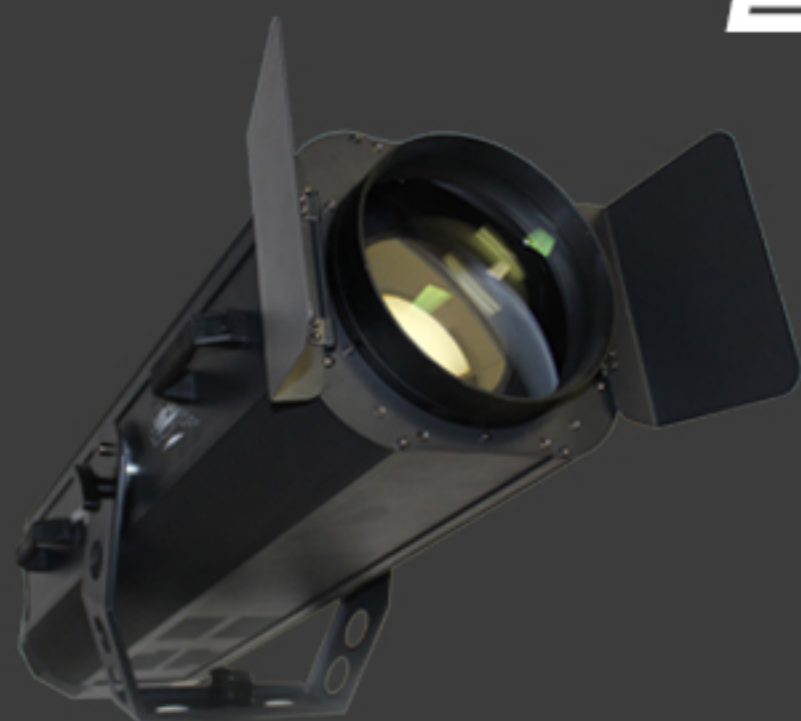


STARGATE LIGHTING

STARGATE LIGHTING

*106 CASTLE DRIVE
MADISON AL, 25758*

*WWW.STARGATELIGHTING.COM
SALES@STARGATELIGHTING.COM
256-858-1979*





FOLLOW SPOTS

1300W

700W



iP WASH LIGHTS

18x12 RGBAWUV



PRO WASH LIGHTS

18x6 RGBAWUV



DMX LASERS

RGB 3 BEAM

RGB RETRO 3 BEAM

DMX LASER

HexEye, FAN / PATTERN LASER





ULTRA WIDE BEAM COVERAGE

*WITH THE CONVEX
HOUSING, THIS LASER CAN
ACHIEVE A COMPLETE 180
COVERAGE AREA FOR
AERIAL EFFECTS AND
TERMINAL POINTS. THE
ULTRA WIDE FAN OUT
MAKES A STUNNING
DISPLAY THAT EASILY
IMPRESSES ANY CROWD.*



PERFECT FROM ANY ANGLE

*WHETHER IT'S ON STAGE,
CENTER OF THE ROOM, OR
EVEN BACK OF HOUSE, A
PAIR OF THESE WILL ADD
SOME EXTRA FLAIR TO
YOUR VENUE. ULTRA QUIET
OPERATION. PERFECT
CENTERPIECE FOR A
ROLLER SKATING RINK!*



HIGHLIGHTS / MAIN FEATURES

- DURABLE DIE CAST ALUMINUM HOUSING
- 6 INDIVIDUAL BEAM SOURCES FOR AMAZING AERIAL EFFECTS
- RED, GREEN, AND BLUE COLOR
- 3 PIN DMX IN/OUT
- DMX, MASTER/SLAVE, AND SOUND ACTIVE CONTROL
- ULTRA WIDE BEAM SPREAD FOR MASSIVE COVERAGE AREA
- N1.3 HIGH PRECISION STEPPER MOTOR
- 200MW 450NM BLUE, 50MW 532NM GREEN
100MW 650NM RED

FIXTURE SPECS

type	DMX Laser
dmx type	3 pin IN/OUT
DMX modes	6 channel
Control Modes	DMX512, Auto, Sound, Master/Slave
Light Engine	Laser
Light Type	6 'eye' beam
Illuminance	500mW blue, 500mW Green, 100mW Red
Pan/Tilt Angle	/
Beam Angle	180 deg, collective
Power Type	120/240V AC
Power Consumption	< 200W
Power Supply	NEMA 5-15P IEC
Height	6"
Width	12"
Depth	4"
Weight	9.2lbs
IP rating	/
housing material	aluminum
housing color	black
operating temp	-4 - 104 F