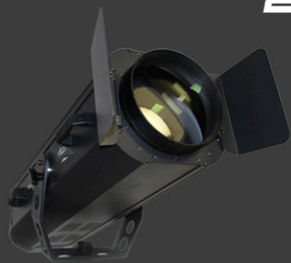


STARGATE LIGHTING

STARGATE LIGHTING

***106 CASTLE DRIVE
MADISON AL, 25758***

***WWW.STARGATELIGHTING.COM
SALES@STARGATELIGHTING.COM
256-858-1979***





FOLLOW SPOTS

1300W

700W



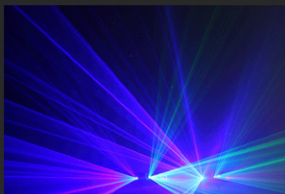
iP WASH LIGHTS

18x12 RGBAWUV



PRO WASH LIGHTS

18x6 RGBAWUV



DMX LASERS

RGB 3 BEAM

RGB RETRO 3 BEAM

DMX LASER

"BLUE LASER"





36-BEAM COVERAGE

WITH THE CIRCULAR ROTATING HOUSING, THIS LASER HAS A COMPLETE 360 COVERAGE AREA THAT CAN MAKE YOUR WHOLE ROOM DANCE! THE ULTRA WIDE FAN OUT MAKES A STUNNING DISPLAY THAT IS CERTAIN TO CAPTIVATE YOUR AUDIENCE FROM FLOOR TO CEILING.

ONE OF A KIND DESIGN

WHETHER IT'S ON STAGE, CENTER OF THE ROOM, OR EVEN BACK OF HOUSE, A PAIR OF THESE WILL ADD SOME TRULY UNIQUE FLAIR TO YOUR VENUE. ULTRA QUIET OPERATION. PERFECT CENTERPIECE FOR A ROLLER SKATING RINK!



HIGHLIGHTS / MAIN FEATURES

- 9 INDIVIDUAL BEAM SOURCES FOR 360 EFFECT SPREAD
- ROTATING HEAD TO ENHANCE BEAM / FIREFLY EFFECT
- 3 PIN DMX IN/OUT
- DMX, MASTER/SLAVE, AND SOUND ACTIVE CONTROL
- UNIQUE DESIGN FOR ONE-OF-A KIND SHOWS
- PIERCING BLUE LASER
- LIGHTWEIGHT DESIGN
- DURABLE DIE CAST ALUMINUM HOUSING

FIXTURE SPECS

type	Laser
dmx type	3 pin IN/OUT
DMX modes	16 channel
Control Modes	DMX512, Auto, Sound, Master/Slave
Light Engine	Laser
Light Type	9 eye blue laser
Illuminance	200 mW
Pan/Tilt Angle	360 pan, 0 tilt
Beam Angle	360 collective
Power Type	120V AC
Power Consumption	50W
Power Supply	NEMA 5-15P IEC
Height	9.8"
Width	9.8"
Depth	9.8"
Weight	10.0 lbs
IP rating	/
housing material	aluminum
housing color	black
operating temp	-4 - 104 F